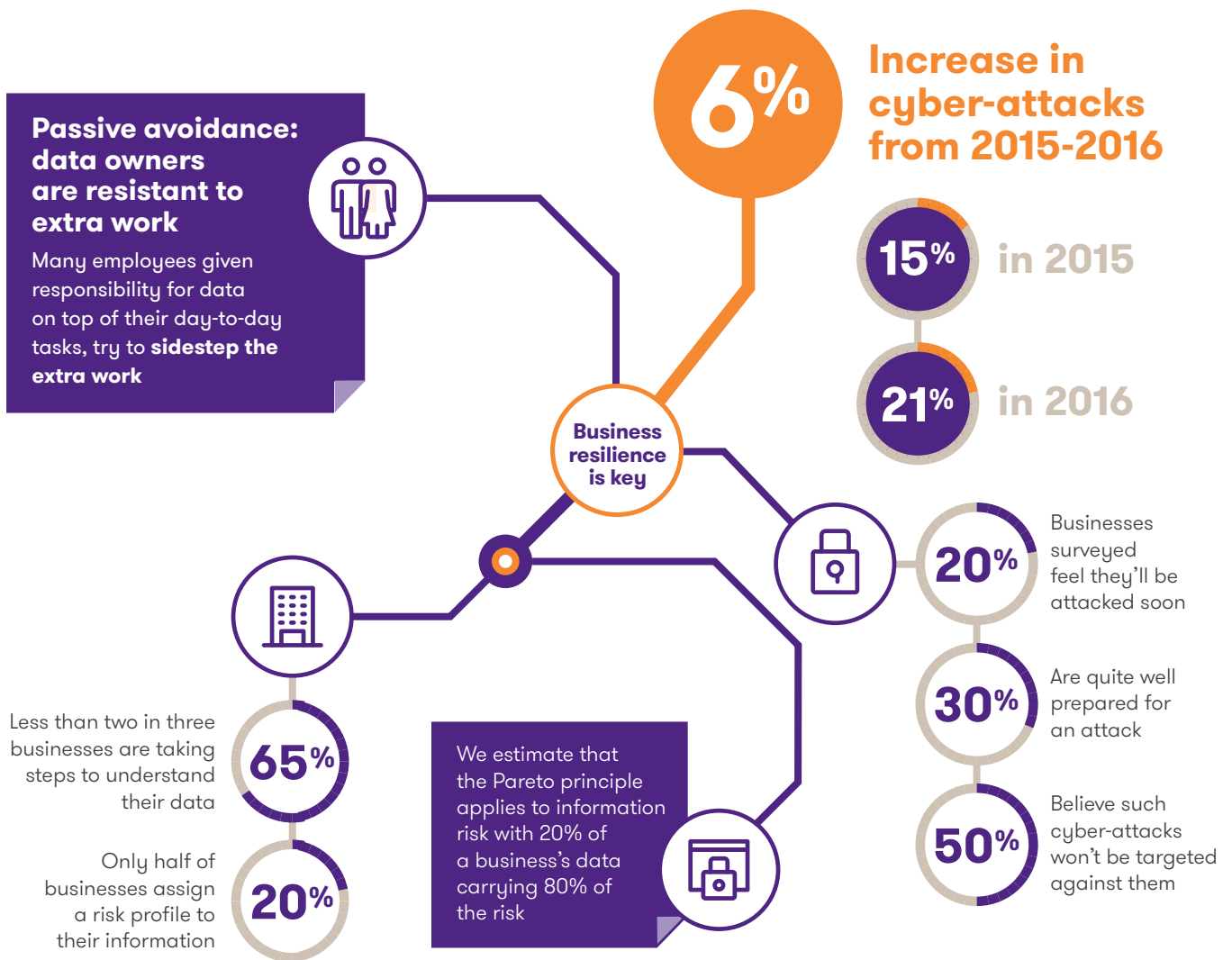


Locking down the value of data



Increase cyber resilience: Three principals to managing data more effectively

1 Clarify ownership: system-wide and data-specific.

Data security should be treated as an enterprise-wide, consistently applied risk that is led by the C-suite and then implemented by employees at the operational level.

2

Embed information risk management 'by design'

Data understanding needs to be built into projects by design, with a multidisciplinary team seeking agreement on the biggest data-related threats to the business.

3 Achieve more 'human' communication and training

All engagement – whether communications from the top or training – needs to take a place on a human, non-technical level.



Grant Thornton

An instinct for growth™

grantthornton.global